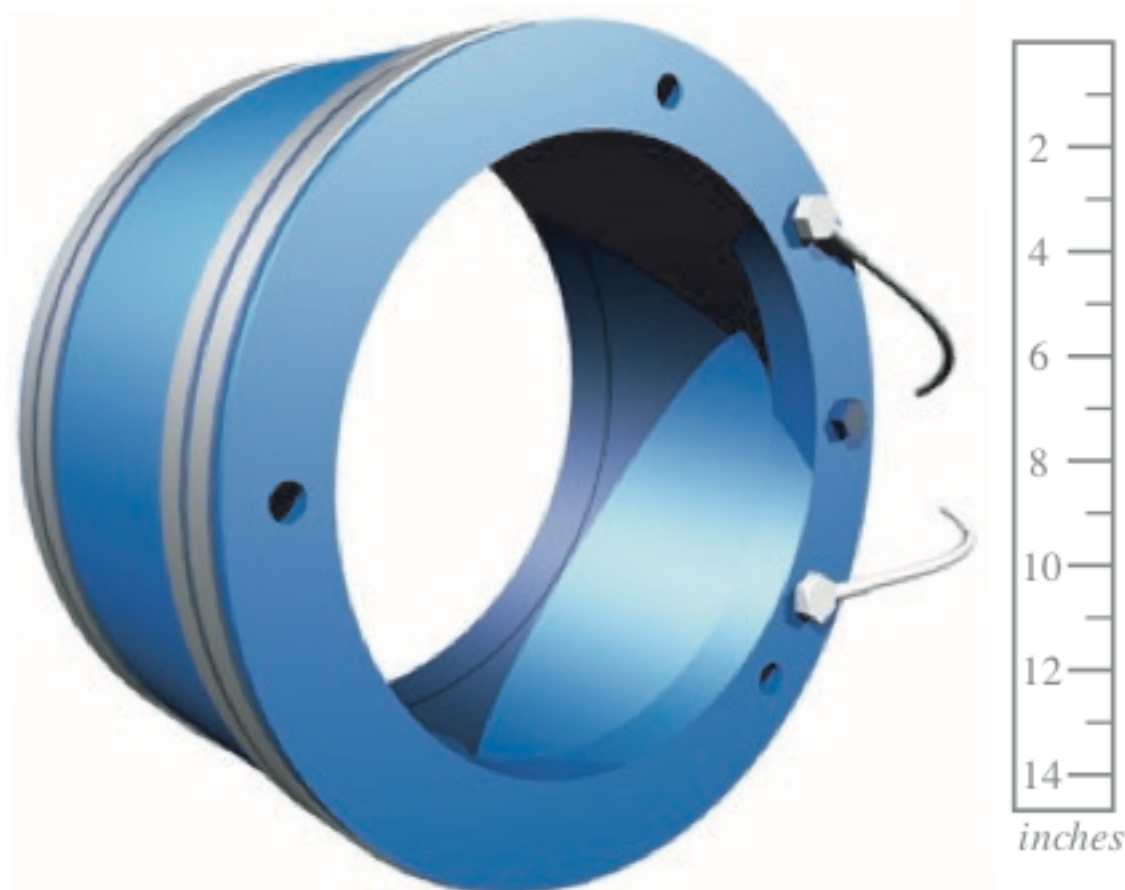


Model ITC-2015

Free Flooded Ring Transducer

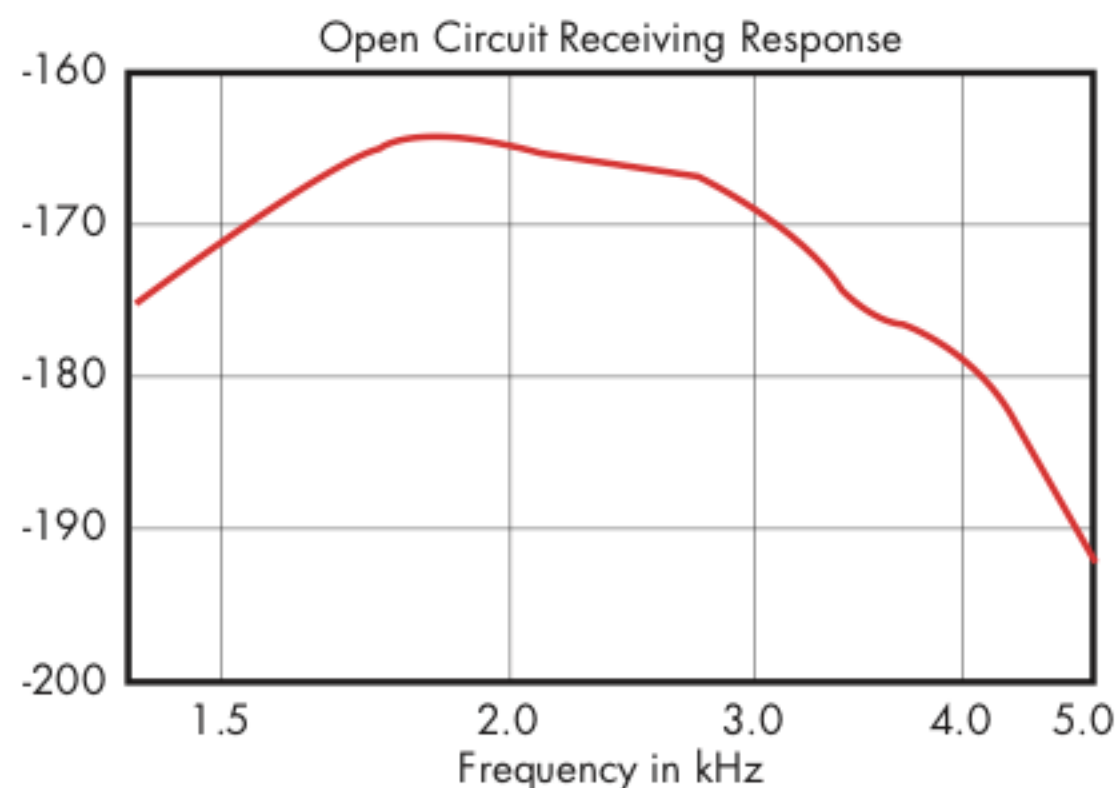
Model ITC-2015

The **Model ITC-2015** is a small size, high power ring transducer. High quality Channelite-5800 lead zirconate titanate ceramic is used as the active material to minimize dielectric and mechanical losses. It is ideal for broadband applications that also require high efficiency.

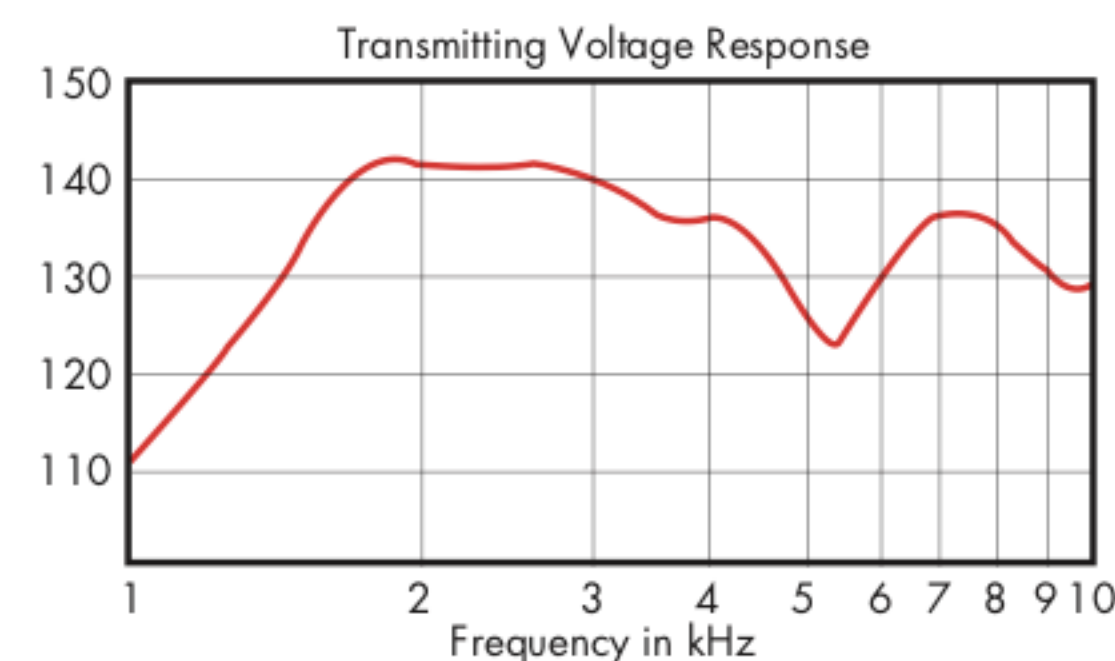


Specifications (Nominal)

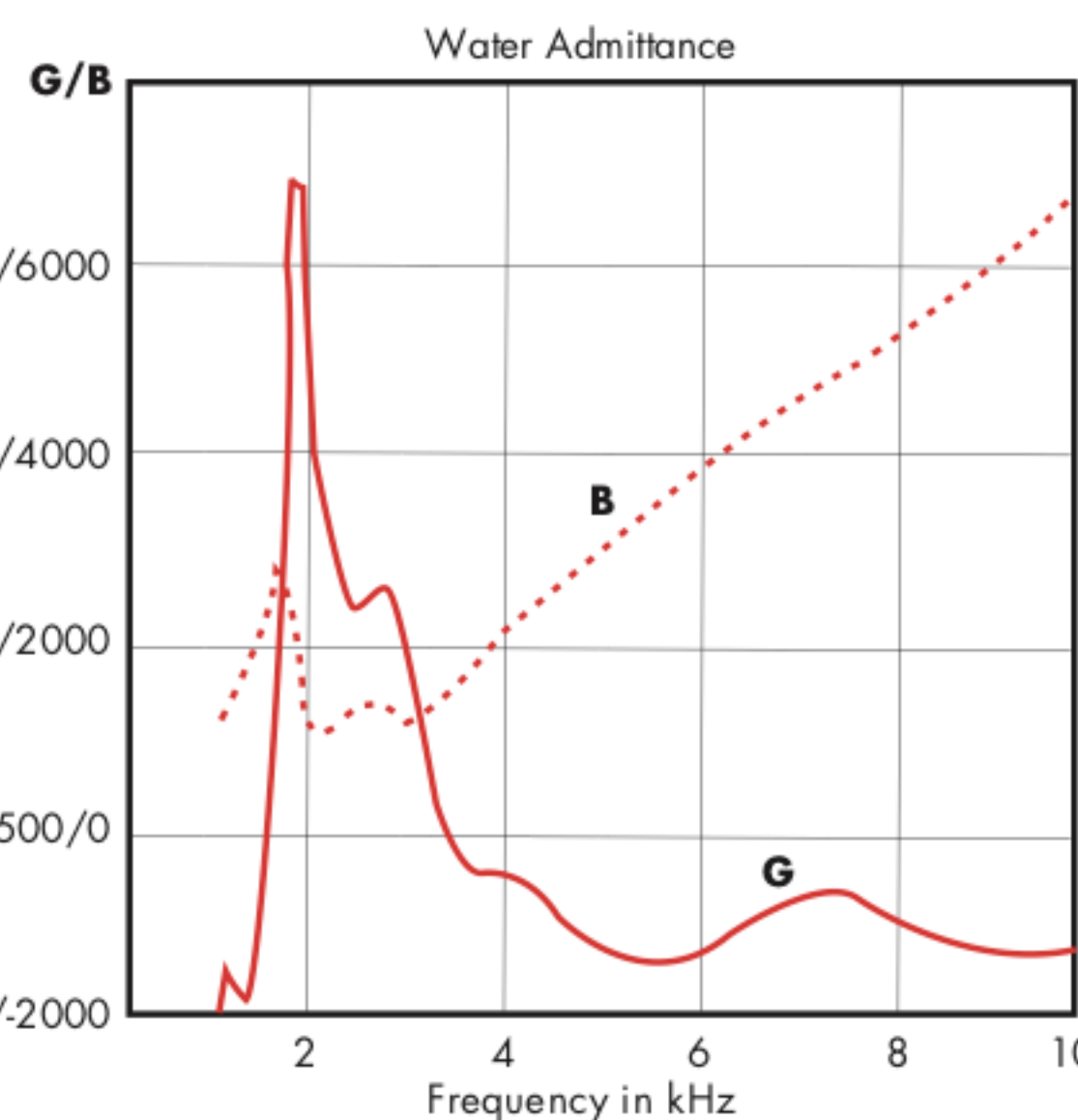
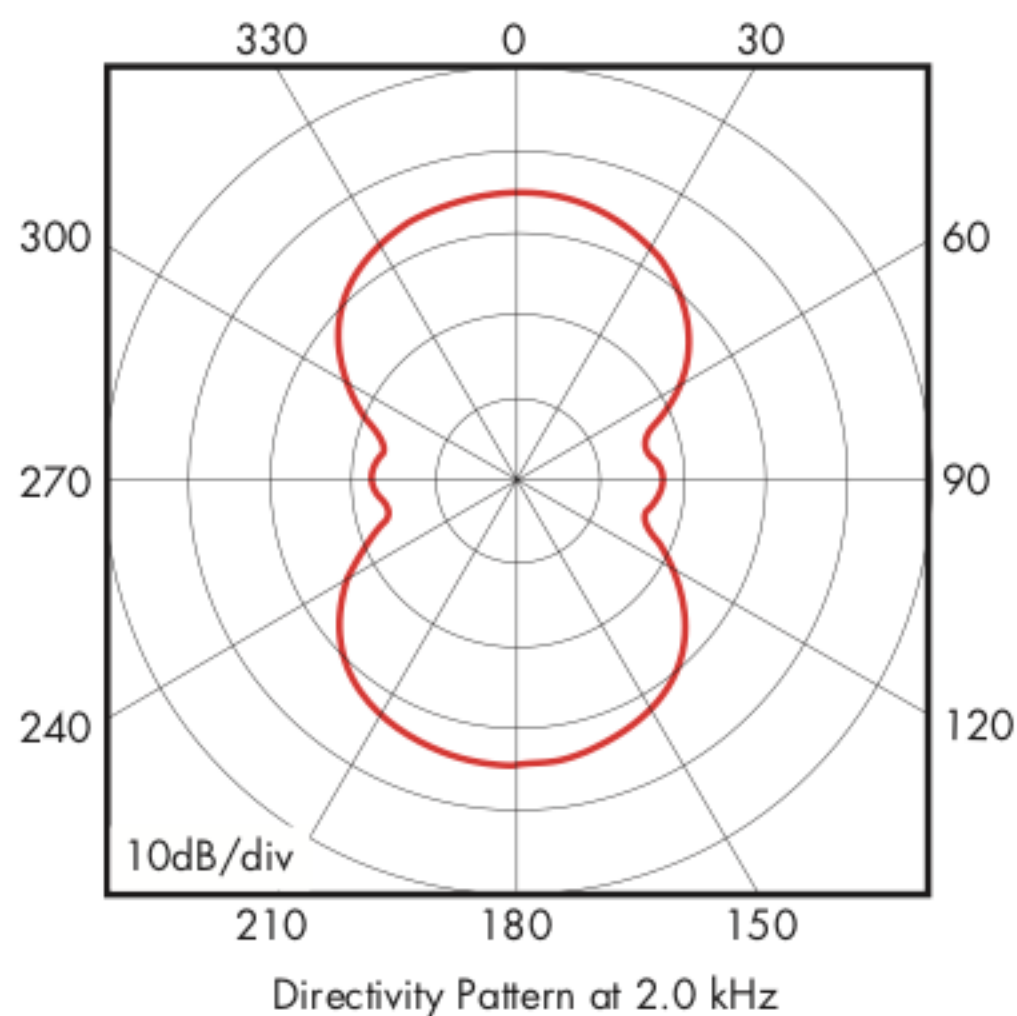
Resonance Frequency f_r	1.8 & 2.8 kHz
Depth	Unlimited
Envelope Dimensions (in.)	14.6D x 7.9H
TVR at f_r	142 & 137 dB// $\mu\text{Pa}/\text{V}@1\text{m}$
Beam Width (-3dB) at f_r	70 & 120 deg
Beam Type	Toroidal
Input Power	15,000 watts



dB re 1V/ μPa



dB re $\mu\text{Pa}/\text{V}@1\text{m}$



Conductance (G) / Susceptance (B) in μS



GAVIAL ITC

Brent.Febo@Gavial.com
805-357-2522
www.GavialITC.com

Gavial ITC
869 Ward Drive
Santa Barbara, CA 93111